



**INTERNATIONAL FOOD
POLICY RESEARCH INSTITUTE**

sustainable solutions for ending hunger and poverty

Agriculture – Health Linkages

Marie T. Ruel

**Food Consumption and Nutrition Division
International Food Policy Research Institute**



**INTERNATIONAL FOOD
POLICY RESEARCH INSTITUTE**

sustainable solutions for ending hunger and poverty

Why examine the linkages between agriculture and health?

AGRICULTURE ↔ HEALTH

- 75% of the poor are dependent on agriculture for their livelihood
- Ag: key to economic growth & ↓poverty
- **AGRICULTURE AFFECTS HEALTH:**
 - Undernutrition: leading cause of child mortality
 - Malaria: 4th largest cause of mortality
 - HIV/AIDS: 40 million
 - Food borne illnesses
 - Occupational hazards
 - Diet-related chronic diseases



HEALTH ↔ AGRICULTURE

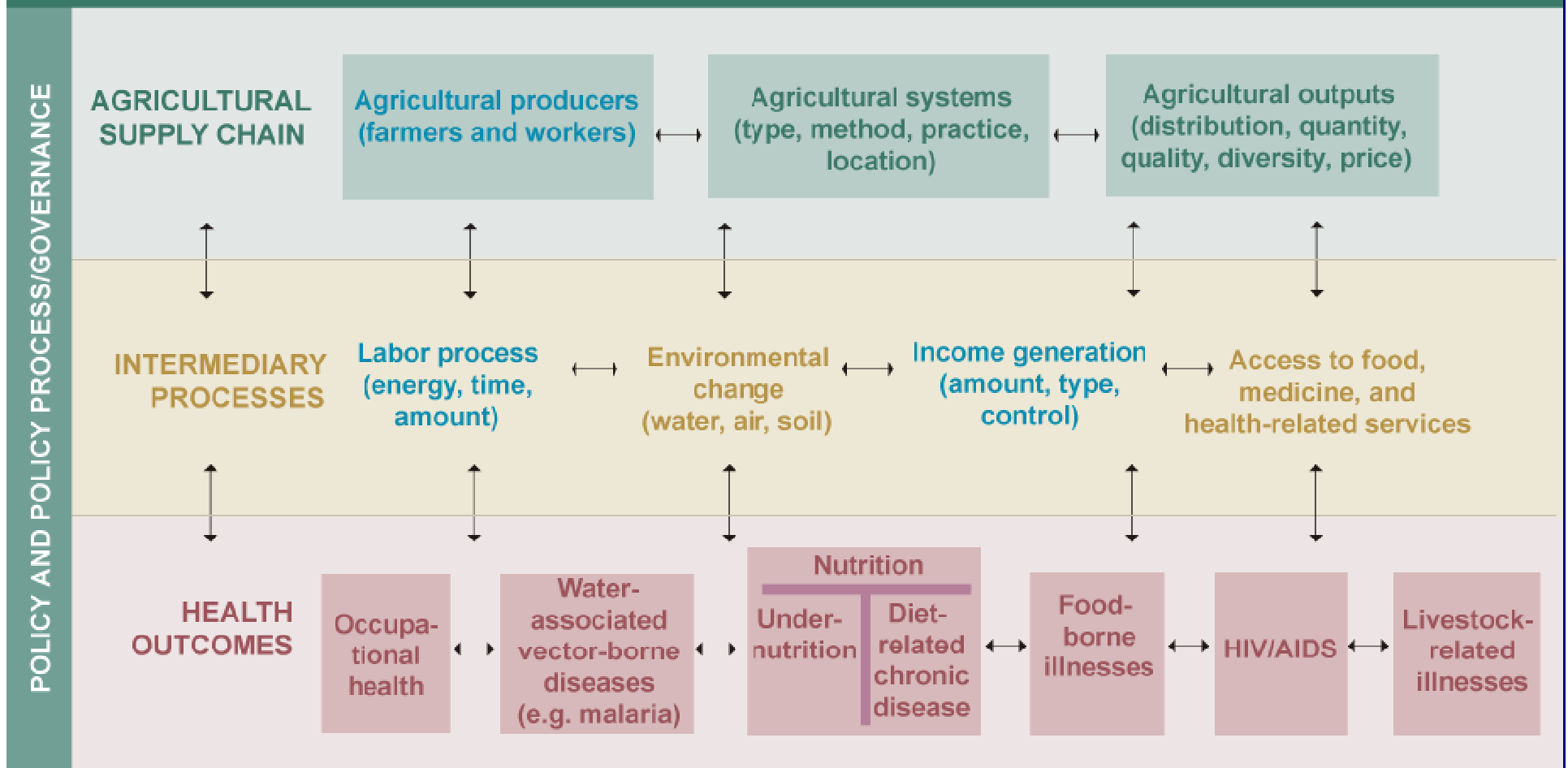
➤ HEALTH AFFECTS AGRICULTURE

- Affects ag productivity: poor health – less productivity – less income – less food security - poverty
- Affects market demand for food/ag products



CONCEPTUAL FRAMEWORK

The Linkages between Agriculture and Health



NOTE: The intermediary processes of labor and income affect the health of farmers and agricultural workers, while environment and access to food and medicines affect the health of the population at large.



BI-DIRECTIONALITY OF AGRICULTURE-HEALTH

- **Actions in one sector affect the other (positively or negatively)**
- **Opportunities for exploiting synergies between the 2 sectors and achieving greater impact on reducing poverty, malnutrition and ill health are often missed**



CHALLENGES & OPPORTUNITIES FOR COLLABORATION

- Emerging health problems related to agriculture and health:
 - Avian flu
 - HIV/AIDS
 - Under and over-nutrition
 - Malaria and irrigation
 - Food safety
- New challenges: globalization, urbanization, Δ demand, longer food chain, changing markets



CHALLENGES

- **Linkages between agriculture & health are dynamic and complex**
- **Significant institutional challenges (competition vs. collaboration, coordination, integration)**
- **Insectoral policies: difficult to monitor & evaluate (accountability, \$\$\$)**
- **Policymakers, practitioners, donors need to be convinced (incentives)**



CGIAR PLATFORM ON AGRICULTURE AND HEALTH

- Building from our expertise in agriculture-nutrition linkages
- Expanding to global health issues
- Exploring new partnerships with health and work on ↑ coordination/collaboration
- Developing conceptual framework
- Documenting successful experiences and challenges (workshops, publications)
- ***Strengthening collaboration & coordination through research, working together, taking advantage of synergies to achieve greater impact on the poor***

