

SERVIR West Africa



OUTLINE

1. WHAT IS SERVIR
2. SERVIR GLOBAL
3. SERVIR HUBS AROUND THE WORLD
4. AREAS OF PERFORMANCE
5. SERVIR WA
6. PARTNERS IN WA
7. STRATEGIC PLAN 2015 - 2020

What is SERVIR?

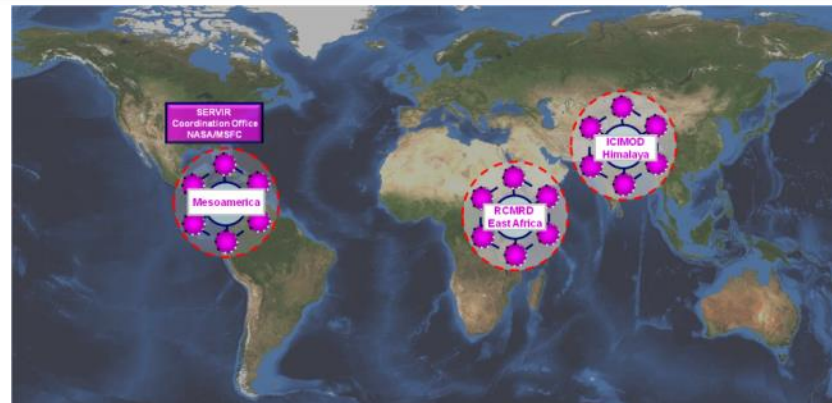
SERVIR GLOBAL

SERVIR strengthens regional institutions around the world to get Earth observation information into the hands of decision-makers to improve climate resilience of Food security; Water, Weather, and Disasters; Land Use/Land Cover



SERVIR History

- Begun as a collaborative effort among NASA, USAID, World Bank, and Central American Commission for Environment and Development (CCAD)
- Opened first hub in Panama in 2005 to serve Central America and the Dominican Republic in cooperation with CATHALAC
- Inaugurated East & Southern Africa hub in 2008 (Nairobi, Kenya) with RCMRD
- Inaugurated Hindu Kush-Himalaya hub in 2010 (Kathmandu, Nepal) with ICIMOD
- ADPC announced as SERVIR-Mekong hub, October 2014



SERVIR-Mesoamerica at CATHALAC Panama City, Panama



Dedicated on February 3, 2005



Primary Themes

- Agriculture
- Biodiversity
- Climate
- Disasters
- Ecosystems
- Health
- Infrastructure



Dedicated on November 21, 2008



Primary Themes

- Biodiversity
- Climate
- Disasters
- Ecosystems
- Health
- Water
- Weather



SERVIR-Himalaya at ICIMOD Kathmandu, Nepal



Dedicated on October 5, 2010



ICIMOD

Primary Themes

- Cryosphere
- Pollution
- Climate change

SERVIR-Mekong at ADPC Bangkok, Thailand

SERVIR GLOBAL

Dedicated on August 31, 2015



Primary Themes

- Water management
- Land-use planning
- Disaster risk reduction
- Infrastructure development
- Natural resources management



Spatial Informatics Group

SEI STOCKHOLM ENVIRONMENT INSTITUTE

Deltares
Enabling Delta Life



Service Areas and Services

SERVIR GLOBAL 

Food security

- Agricultural monitoring
- Drought management
- Crop productivity
- Rangeland decision support
- Aquaculture decision support

Water resources and disasters

- Water resources monitoring and forecasting
- Flood management
- Hazard monitoring and forecasting
- Fire monitoring
- Water quality monitoring

Weather and climate

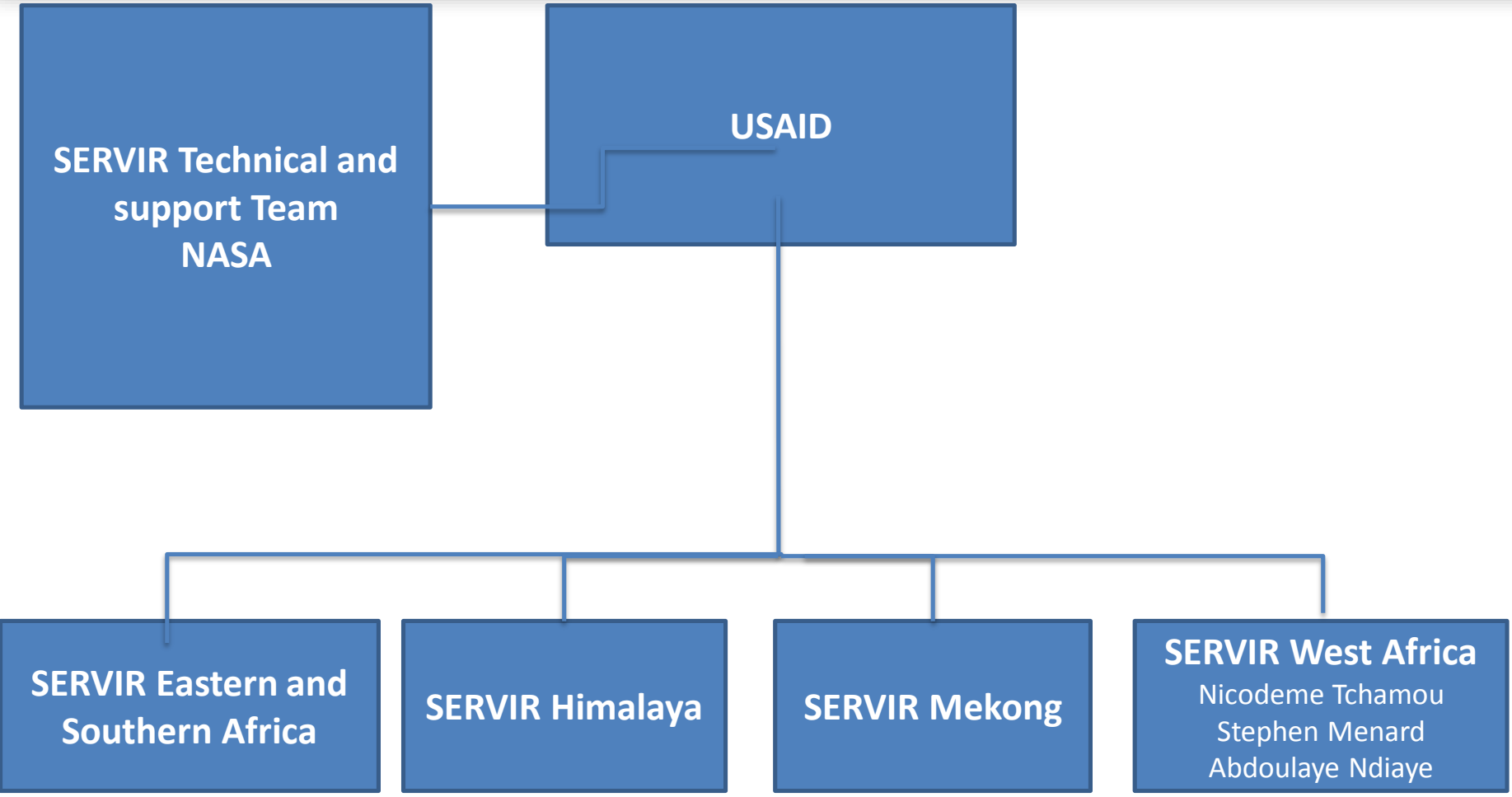
- Weather monitoring and forecasting
- Climate modeling and scenario planning
- Air quality monitoring
- Adaptation planning

Land cover/land use and ecosystems

- Land cover/land use change mapping
- Ecosystem management
- REDD+ decision support
- Land use decision support
- Low emission development planning

SERVIR Guiding Principles

1. Responding to regional development needs to deliver solutions at scale
2. Connecting the most appropriate Earth observation data and high quality applied science
3. Working through co-development on user-centered services
4. Building capacity to strengthen service providers and promote sustainability
5. Promoting free and open data
6. Sharing knowledge across hub and partner networks



Why SERVIR for West Africa?



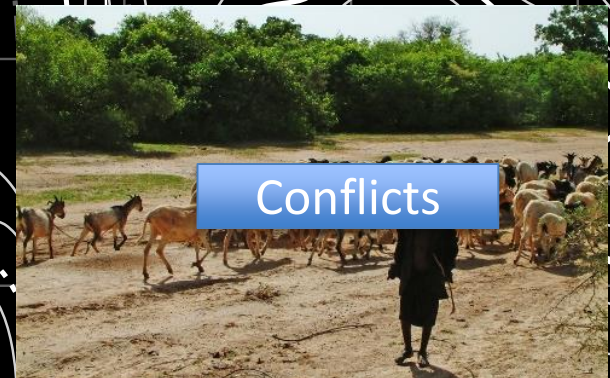
Drought



Flood

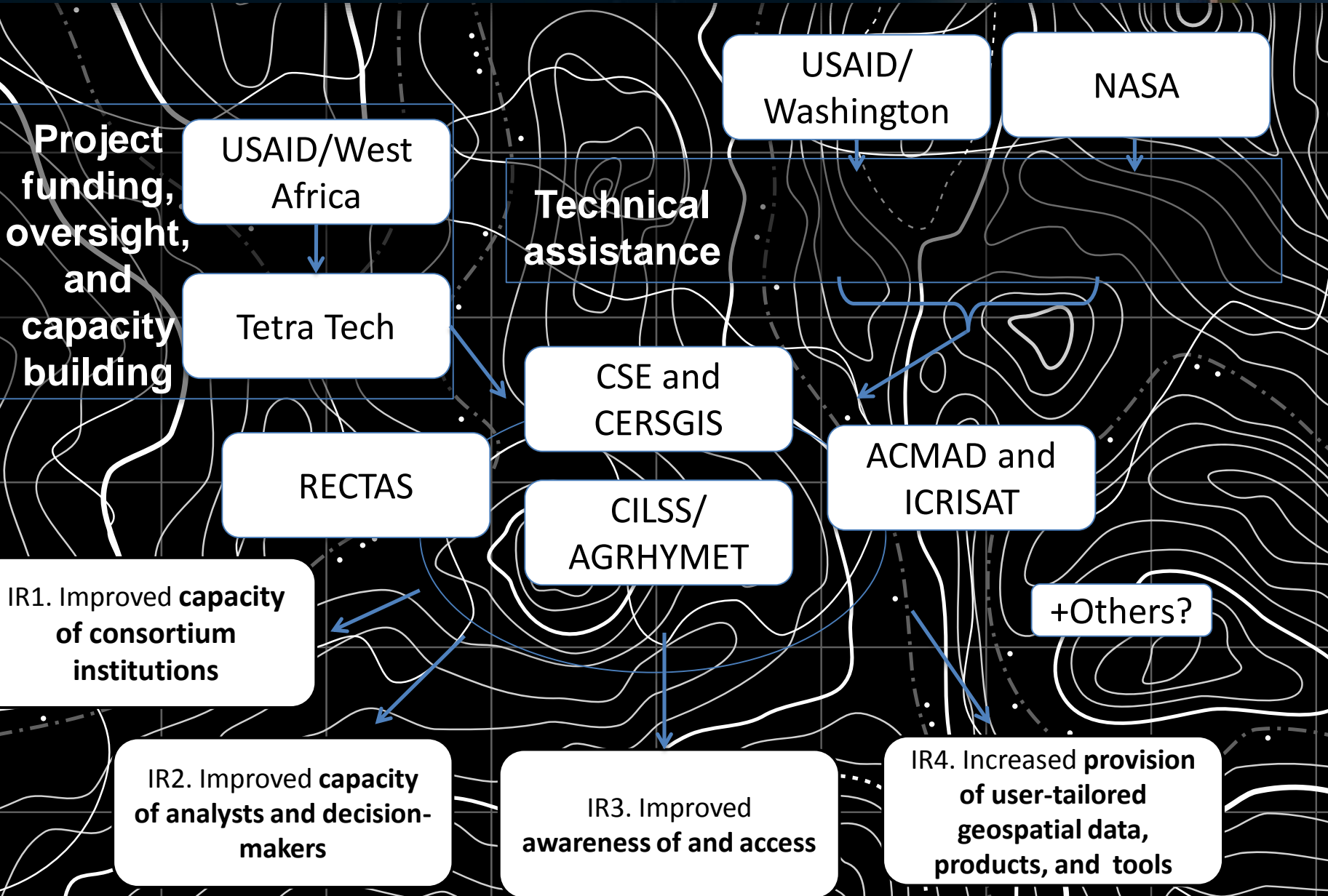


Coastal resilience



Conflicts

SERVIR W. Africa Structure



Results Framework

Goal: Improved economic, social, and environmental resilience to climate change

Objective: Increased use of Earth observation information and geospatial technologies in development decision-making

IR2. Improved **capacity of analysts and decision-makers** to use earth observation information and geospatial information technologies

IR3. Improved **awareness of and access to geospatial data, products, and tools**

IR4. Increased provision of **user-tailored geospatial data, products, and tools** to inform decision-making

IR1. Improved **capacity of hubs to function as regional service providers**

Strategic Plan 2015-2020



SERVIR

Endorsed by USAID and NASA leadership:

1. Reach More Users with Demand-Driven Products and Services
2. Connect More Innovative and Appropriate Science to SERVIR
3. Expand SERVIR Networks through New Strategic Partnerships
4. Improve Sustainability of SERVIR at Multiple Levels